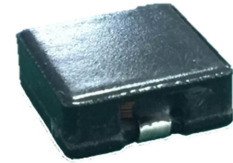


**Features**

- Compact size using flat wire, and SMD type.  
扁平线小尺寸封装，贴片类型
- Low radiation noise by magnetically shielded construction  
闭合磁路封装，低辐射
- High current, Low resistance.  
大电流，低电阻
- Operating temperature : -40°C~+150°C.  
工作温度：-40°C~+150°C


**Applications**

- high efficiency DC/DC converters. 高效 DC/DC 转换器
- Single and polyphase buck converters. 单相、多相降压转换器
- Filter for audio applications. 音频滤波应用
- Optimized for high current boost applications. 大电流升压应用优化
- Laptops, Graphic cards, Motherboards. 笔记本、显卡、主板等

**Electrical characteristics**

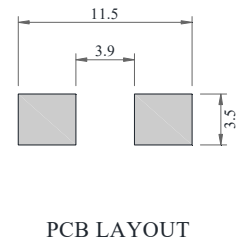
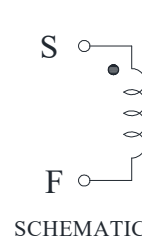
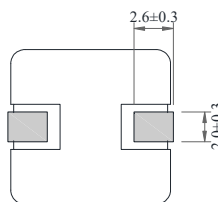
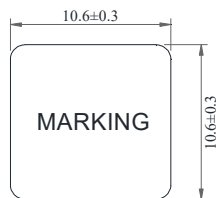
Part number 料号	Inductance 电感量 μH	DC resistance 直流电阻 mΩ max(typ.)	DC saturation current 直流饱和电流 A max.			Temperature rise current 温升电流 A max.	
			ΔL ≤ 10%	ΔL ≤ 20%	ΔL ≤ 30%	ΔT ≤ 20°C	ΔT ≤ 40°C
EEA103-201	0.2 ± 20%	1.0(0.9)	20.0	35.0	50.0	15.0	20.3
EEA103-331	0.33 ± 20%	2.5(2.1)	14.7	24.6	36.0	11.0	16.0
EEA103-561	0.56 ± 20%	2.5(2.1)	14.0	23.2	33.0	11.0	16.0
EEA103-681	0.68 ± 20%	5.5(3.9)	11.0	15.8	21.0	9.1	12.5
EEA103-102	1.0 ± 20%	5.5(3.9)	10.0	15.6	21.0	9.1	12.5
EEA103-122	1.2 ± 20%	7.6(6.3)	7.0	10.7	15.0	7.8	10.7
EEA103-152	1.5 ± 20%	7.6(6.3)	7.6	12.3	18.0	7.8	10.7
EEA103-222	2.2 ± 20%	13.1(12.4)	6.8	10.5	15.0	6.8	8.7

**Remark**

- Inductance is measured with a LCR meter 4284A or equivalent.  
Test frequency at 100kHz
- DC resistance is measured with 16502 Milliohm Meter , or equivalent.  
Reference ambient temperature 25°C

**备注**

- 电感量测试采用 4284A 数字电桥或同等仪器；  
测试频率 100KHz
- 直流电阻测试采用 16502 毫欧表或同等仪器；  
环境温度 25°C

**Dimensions**


**Electrical Characteristic Curve**

